

DC/DC Converter

Single output

Serie SA

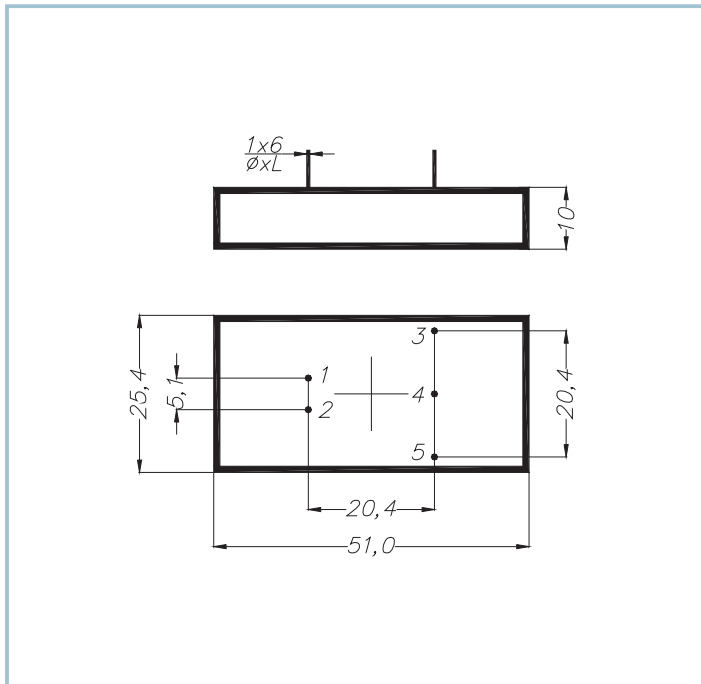
12 W



Input [V]	Output [V]	Output [mA]	Model
9 ÷ 18	5	2000	SA 105
9 ÷ 18	12	1000	SA 112
9 ÷ 18	15	800	SA 115
18 ÷ 36	5	2000	SA 205
18 ÷ 36	12	1000	SA 212
18 ÷ 36	15	800	SA 215
36 ÷ 72	5	2000	SA 305
36 ÷ 72	12	1000	SA 312
36 ÷ 72	15	800	SA 315

SMT - on ceramic technology
 Metal case: 51 x 25,4 x 10 mm
 Standard pin-out
 Operating temperature range: -40 ÷ +85°C
 Storage temperature range: -40 ÷ +125°C
 Efficiency: >83%
 Radiated EMI/RFI: EN55022-B
 Isolation I/O: 500VDC
 Output voltage accuracy: ±1%
 Very low output ripple (20MHz): <100mVpp
 Regulation line: ±0,5%
 Regulation load: ±1%
 Short circuit proof
 Temperature coefficient: 0,02%/°C

Note: Typical specifications at T_a=+25°C under nominal line voltage and full-load conditions, unless otherwise noted.



Connections

Pin 1 +Input
 Pin 2 -Input
 Pin 3 +Output
 Pin 4 no pin
 Pin 5 -Output

Production and sales office
ELEKTRA srl
 Zona Industriale, 3 - 39052 Caldaro (BZ) Italy
 Tel.: +39 0471 962255 - Fax: +39 0471 965668
<http://www.elektra.it> - e-mail: info@elektra.it



ISO 9001
 Registered

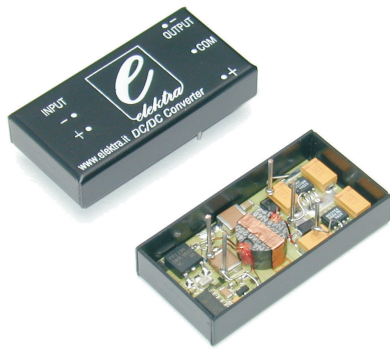
Sales office for Germany
ELEKTRAREINSTADLER GmbH
 Arnbacherstr., 32 - 85247 Schwabhausen Germany
 Tel.: +49 08138 9161 - Fax: +49 08138 8484
 e-mail: elektra.reinstadler@t-online.de

DC/DC Converter

Dual output

Serie SA

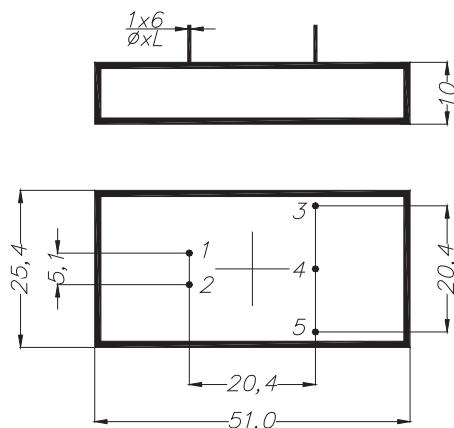
12 W



Input [V]	Output [V]	Output [mA]	Model
9 ÷ 18	±12	±400	SA 122
9 ÷ 18	±15	±300	SA 125
18 ÷ 36	±12	±400	SA 222
18 ÷ 36	±15	±300	SA 225
36 ÷ 72	±12	±400	SA 322
36 ÷ 72	±15	±300	SA 325

SMT - on ceramic technology
 Metal case: 51 x 25,4 x 10 mm
 Standard pin-out
 Operating temperature range: -40 ÷ +85°C
 Storage temperature range: -40 ÷ +125°C
 Efficiency: >80%
 Radiated EMI/RFI: EN55022-B
 Isolation I/O: 500VDC
 Outputs individually regulated & controlled (lin.)
 Output voltage accuracy: ±1%
 Very low output ripple (20MHz): <100mVpp
 Regulation line: ±1,5%
 Regulation load: ±2,5%
 Short circuit proof
 Temperature coefficient: 0,02%/°C

Note: Typical specifications at T_a=+25°C under nominal line voltage and full-load conditions, unless otherwise noted.



Connections

Pin 1 +Input
 Pin 2 -Input
 Pin 3 +Output
 Pin 4 Com.
 Pin 5 -Output

Production and sales office
ELEKTRA srl
 Zona Industriale, 3 - 39052 Caldaro (BZ) Italy
 Tel.: +39 0471 962255 - Fax: +39 0471 965668
<http://www.elektra.it> - e-mail: info@elektra.it



ISO 9001
 Registered

Sales office for Germany
ELEKTRAREINSTADLER GmbH
 Arnbacherstr., 32 - 85247 Schwabhausen Germany
 Tel.: +49 08138 9161 - Fax: +49 08138 8484
 e-mail: elektra.reinstadler@t-online.de